

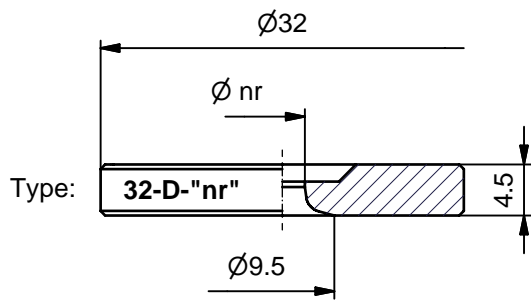


Orifices 32

32-D / 32-DS / 32-L / 32-M / 32-E

32-5E01-4A-E

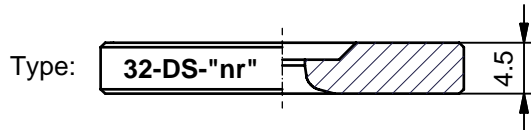
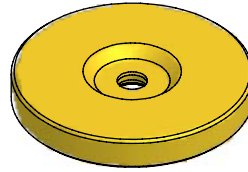
07-06-2006



Type:

32-D-"nr"

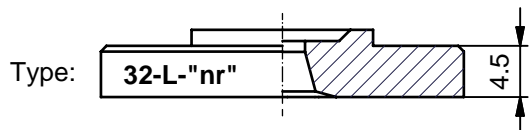
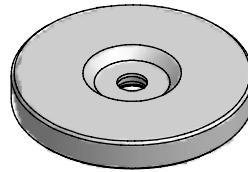
w.st.nr.: 1.2379 TiN coated



Type:

32-DS-"nr"

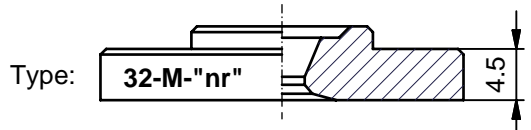
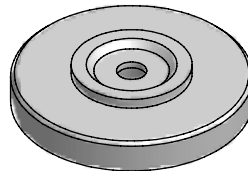
w.st.nr.: 1.2842 hardened 58 Rc



Type:

32-L-"nr"

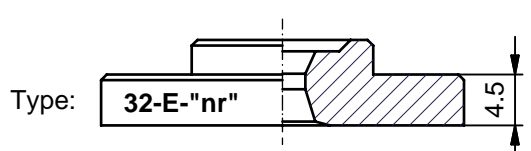
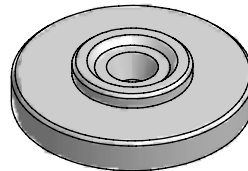
w.st.nr.: 1.2842 hardened 58 Rc



Type:

32-M-"nr"

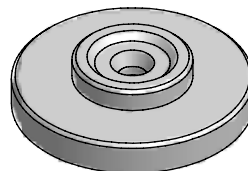
w.st.nr.: 1.2842 hardened 58 Rc



Type:

32-E-"nr"

w.st.nr.: 1.2842 hardened 58 Rc



| nr |
|------|
| 0.8 |
| 1.0 |
| 1.2 |
| 1.4 |
| 1.6 |
| 1.8 |
| 2.0 |
| 2.25 |
| 2.5 |
| 2.75 |
| 3.0 |
| 3.25 |
| 3.5 |
| 3.75 |
| 4.0 |
| 4.25 |
| 4.5 |
| 4.75 |
| 5.0 |
| 5.5 |
| 6.0 |
| 6.5 |
| 7.0 |
| 7.5 |
| 8.0 |

ORDERING please specify:

- Orifice type
- nr
- Quantity